



Bunyip North Energy Storage

Project Update and Have Your Say

March 2026



Up to 400 MW/2400MWh
Could power 250,000+ homes at peak



North of Bunyip
Along the Princes Hwy



Approx. 22ha footprint
On private grazing land



Local Benefits
Including direct jobs and Community Benefit Fund

RES is proposing a **battery energy storage system (BESS)** near Bunyip North. We have progressed technical, environmental and cultural heritage studies to inform the project and a future Planning Permit Application. We expect to lodge the Planning Permit Application in Q2 2026.

Feedback from the community and key stakeholders has helped inform our planning work, including an indicative site layout, now available on the project website. The layout responds to technical, environmental and regulatory considerations and may continue to be reviewed as planning work progresses.

We're inviting your feedback now—particularly any local knowledge, questions, or matters you think the project team should be aware of as we prepare the application. We are also seeking ideas on what **community benefit sharing opportunities** would be most meaningful for the area.



More information: Scan the QR code to view the project website, including the indicative layout, technical assessment summaries, planning pathway and FAQs, or read on.



Have Your Say: Scan the QR code to share feedback and local knowledge ahead of the planning submission and register for updates, such as when the planning application is submitted.

Project Summary

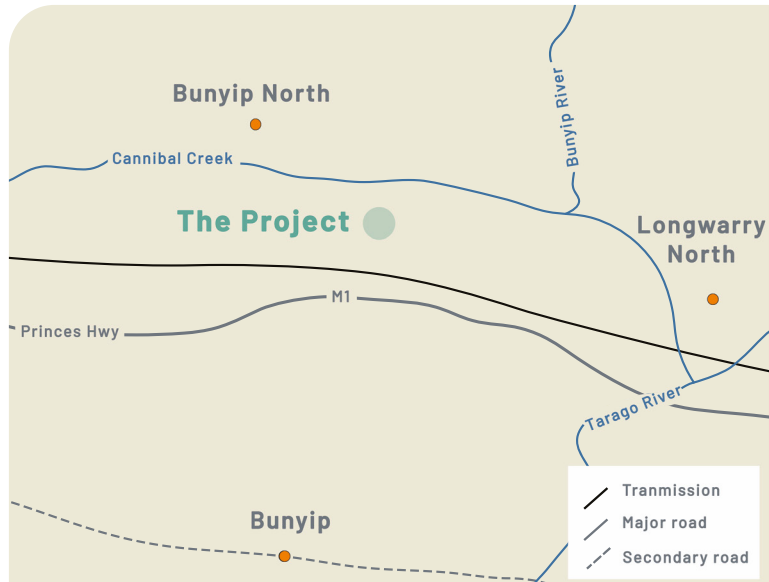
Where is the project? The project is proposed near Bunyip North, north of the Princes Highway, approximately 3 km from Bunyip, within the Cardinia Shire. The site is currently used for grazing.

What is being proposed? A utility scale Battery Energy Storage System (BESS) with storage capacity of up to 400MW / 2400MWh (400MW for 6 hours), which could supply electricity to over 250,000 households at times of peak demand.

A BESS stores electricity and releases it when demand is high. It can also support grid stability services (e.g., regulating voltage and frequency).

The Bunyip North BESS is proposed to connect through a new terminal station and a cut in to existing 220 kV transmission lines, supporting the broader Victorian grid.

Why is it needed? Supporting a more reliable electricity grid and enabling greater integration of renewable energy.



Benefits

If developed, the Bunyip North Energy Storage Project is intended to support a cleaner, more reliable energy grid for Victoria and deliver benefits to the local community.

Community benefits (shaped by local feedback)

RES is seeking community feedback to shape benefit sharing opportunities that reflect local priorities.

Examples include:

- » Support for local clubs, events or educational programs
- » Sponsorships for environmental or sustainability initiatives
- » Partnerships with community organisations or schools
- » Enhancements to local amenities or open space.

Local jobs and economic activity

The Project is expected to support local economic activity during construction and operations, with opportunities for local contractors and suppliers (e.g., civil works, transport, trades, accommodation, catering and other services).

How to register interest (suppliers & benefit ideas)

Local businesses and community members can register interest, share ideas for community benefits, or express interest in supplying goods and services via the online form (QR on front page) or by contacting the team.

Supporting the community

RES is committed to supporting regional communities through the sponsorship of community projects, groups and events to provide environmental, social, cultural or educational benefits to communities that host our projects. If you are involved in a community organisation or project that could benefit from sponsorship, please contact the Project team.

RES has sponsored the Bunyip Football Club sustainable energy clubhouse upgrades, Bunyip Renewables Action Group soft plastics recycling and provided Bunyip Landcare with a flotation device for work on waterways.

Community engagement update (What we've been doing & what we heard)

Our approach: RES is committed to early, ongoing and transparent engagement with the community as the Project progresses and encourages community members to ask questions and share feedback.

RES has attended local community events to share information and answer questions, including information stalls at the Bunyip Community Markets.

FAQs published in response to questions:

We have prepared a set of FAQs based on early engagement feedback, including website submissions and conversations at the community markets. These FAQs cover common topics such as site selection, planning pathway and community input, environment/cultural considerations, fire safety, and benefit sharing opportunities.



Indicative layout and technical studies summary now available

To help answer questions and support early feedback ahead of the planning application, we are sharing an **indicative site layout** and **high level summaries of technical studies** informing the planning application.

The indicative layout responds to technical, environmental and regulatory considerations and **may continue to be reviewed as planning work progresses.**

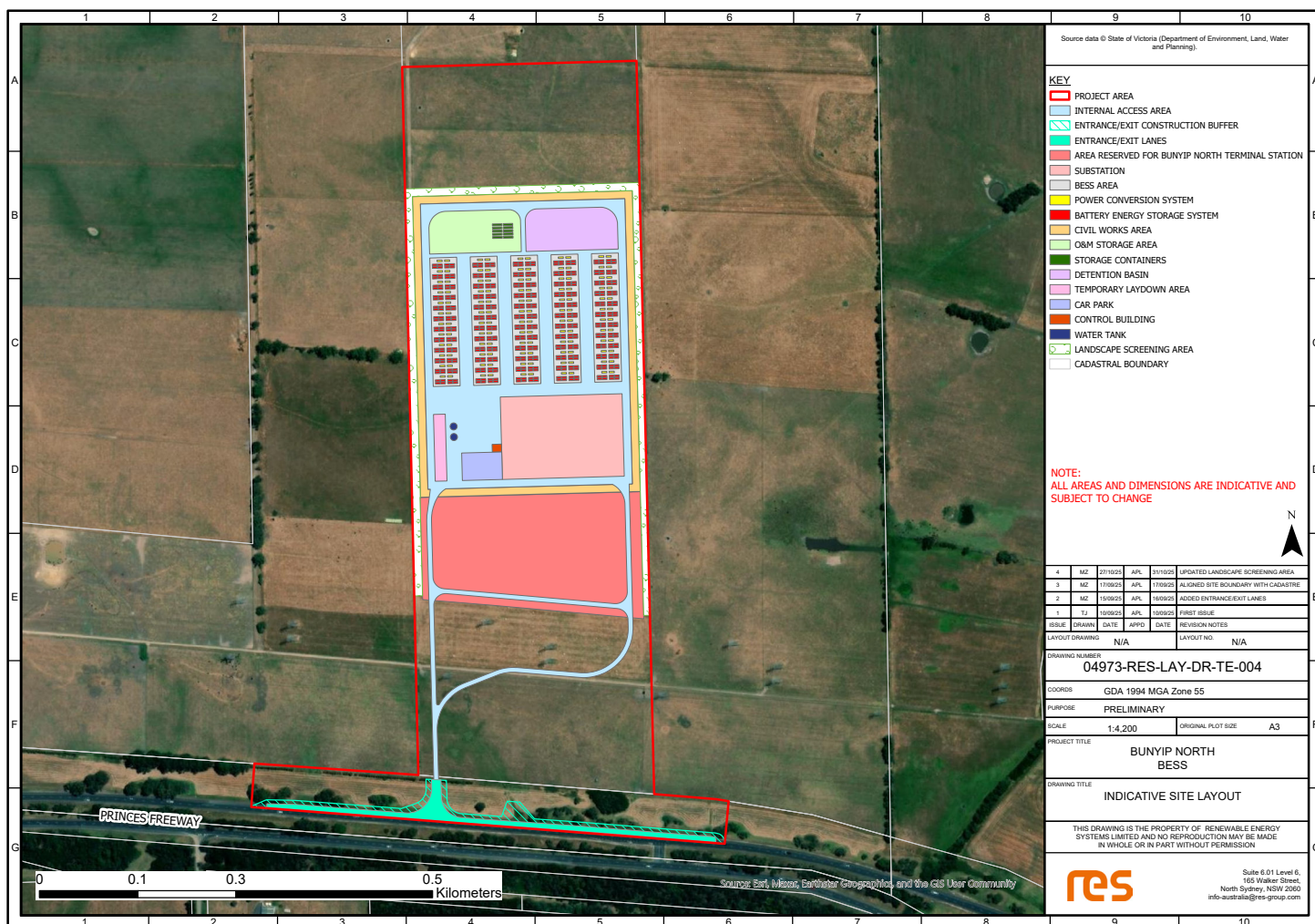


Indicative Layout

The indicative layout shows the proposed arrangement of key project components within the project area, including access and grid connection infrastructure.

The indicative layout includes:

- » **Battery energy storage units** (containerised battery units) and associated electrical equipment.
- » **Power conversion equipment** (inverters/transformers) and on site electrical infrastructure.
- » **Grid connection infrastructure**, including the on site substation and terminal station.
- » Supporting infrastructure, including a control building/systems, internal access and parking, firefighting water storage and fire safety systems, stormwater management, landscaping, and temporary construction areas.



Technical Assessments – High-level Findings

The following technical assessments are being carried out to inform the planning application submission. **Full technical reports will be available during the formal public exhibition period** as part of the planning application.



Ecology

Detailed field surveys within and surrounding the project area have informed the understanding of biodiversity values and constraints relevant to the project. The project area has been designed to support an appropriate buffer from higher quality native vegetation and aquatic habitat identified around Cannibal Creek to the project's north. Mitigation measures including the established buffer, maintenance of avoidance strategies and vegetation management support the project proceeding with minimal environmental risk.



Hydrology

Baseline flood and surface water modelling has been undertaken to understand flood behaviour and inform a flood resilient layout. The assessment applies hydrologic and hydraulic modelling, with consideration of climate change, to guide infrastructure siting and stormwater planning with Cannibal Creek and Tea Tree Creek in mind.



Fire and risk management

A Risk Management Plan sets out how the project addresses requirements as detailed in CFA guidelines, including emergency access considerations, firefighting water supply, fire breaks, separation distances and fire detection/suppression provisions. The plan details measures to manage fire and bushfire risks through design, construction, commissioning and operation, including assessment against Clause 13.021S (Bushfire Planning).



Noise

The assessment considers operational noise limits against predicted operational noise from the project at nearby Noise Sensitive Areas (NSAs), in accordance with EPA Victoria's Noise Protocol. The noise assessment indicates the project is expected to meet Victorian noise requirements at nearby homes during day, evening and night periods.



Traffic and transport

The Traffic Impact Assessment considers the surrounding road network to confirm that the proposed access arrangement can accommodate construction and operational traffic. Project traffic is modelled to ensure it performs with good operating conditions, with minimal delays/queues expected.



Landscape and visual

A public viewpoint assessment is complete from multiple perspectives surrounding the project, to conclude how the project can be accommodated within the local landscape without unacceptable visual effects.

Planning pathway & consultation

As renewable energy infrastructure supporting Victoria's cleaner and more reliable energy future, the Bunyip North BESS is eligible for assessment under the **Development Facilitation Program (DFP)**. Under this process, a planning application will be submitted to the Department of Transport and Planning for assessment in **Q2 2026**.

How can the community have a say?

There will be a **public exhibition period** where the full planning application and supporting technical reports are made available for community review. This period is typically **14–28 days** (subject to the Minister's direction). During this time, anyone can make a submission.



What happens next?

- » We will continue planning and assessment work to support the Planning Permit Application, including finalising the information required for submission.
- » We expect to lodge the Planning Permit Application in Q2 2026.
- » Once lodged, the application will be made available during a public exhibition period (typically 14–28 days, subject to the Minister's direction), when anyone can review the documents and make a submission.
- » The indicative layout is available on the project website and may continue to be reviewed as planning work progresses.

Stay involved

To provide feedback ahead of submission and register for updates (including when the application is submitted), use the feedback QR on the front page or visit the project website.



Timeline

- Q3 2025 ● Project launch, key stakeholder engagement and preliminary studies
- Q4 2025 ● Ongoing community engagement and technical investigations
- Q2 2026 ● Lodge planning permit & connection applications
- Q3 2027 ● Commence construction (subject to approvals)
- 2029 ● Begin Operations

The dates above are estimated and subject to change.



Typical BESS layout

Contact the Team

✉ info@bunyipnorth-energystorage.com

🌐 [Bunyipnorth-energystorage.com/](https://bunyipnorth-energystorage.com/)

📞 0447 049 402 (Kim Stone, Community Engagement Manager)

Or scan the QR code



We welcome your questions and feedback — contact our Project Team by email, or visit the website to learn more and register for updates.

In planning for Australia's clean energy future, RES acknowledges its rich history. We pay our respects to the Bunurong People of the Kulin Nation, the Traditional Custodians of Country on which the Bunyip North Project is proposed.

We recognise their ongoing connection to land, water, wildlife and community and pay our respects to Elders past and present.

